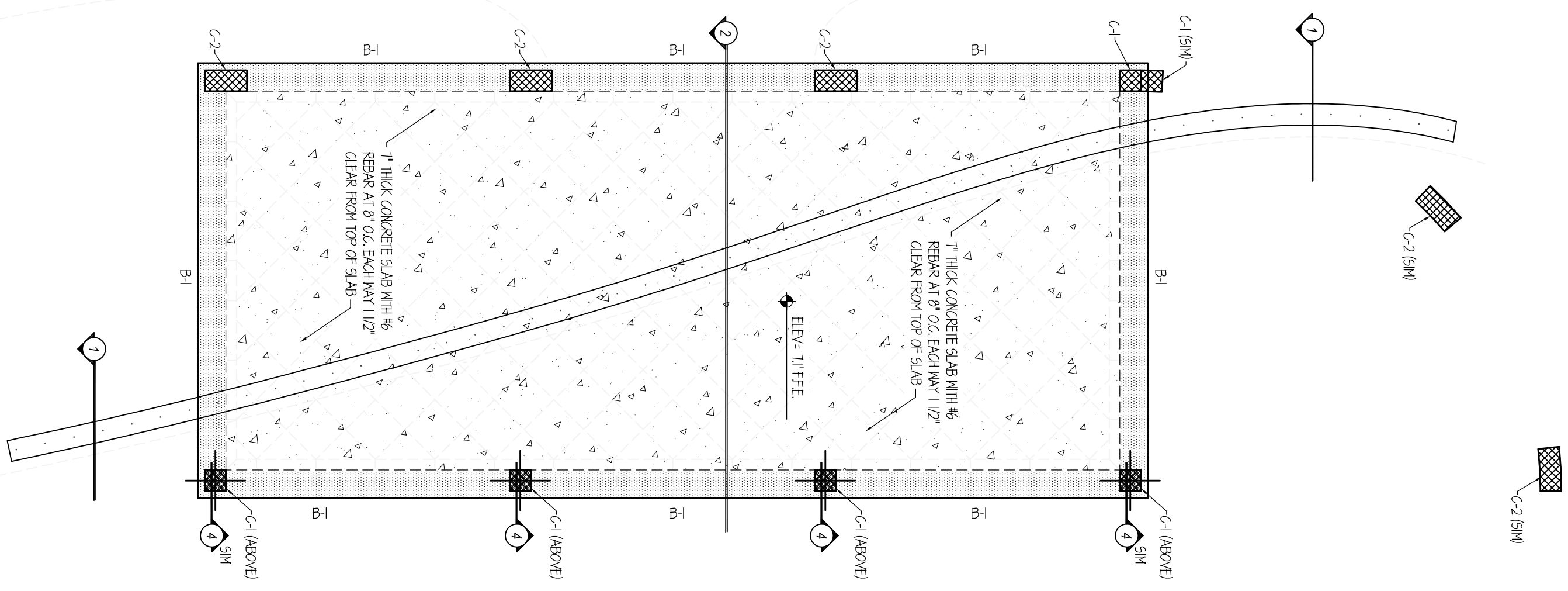
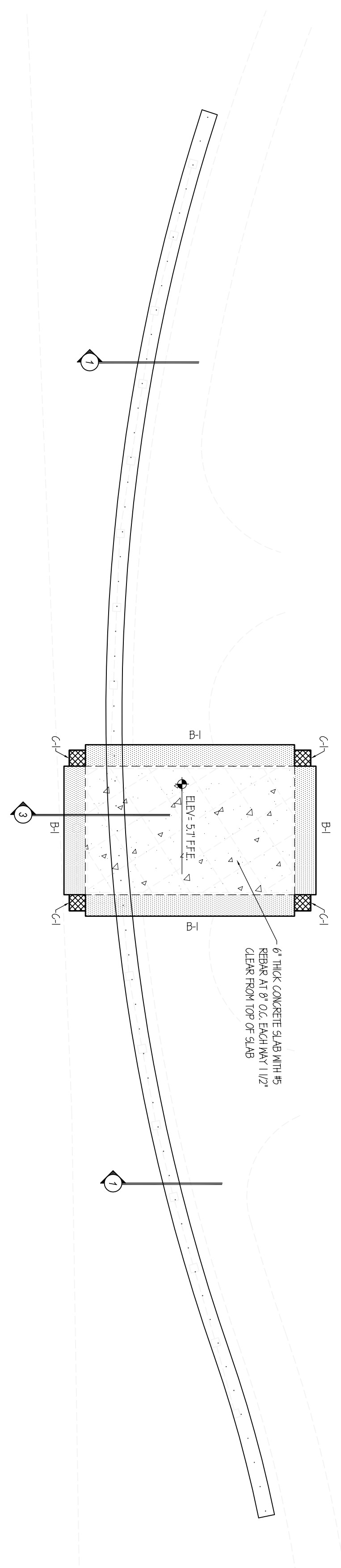


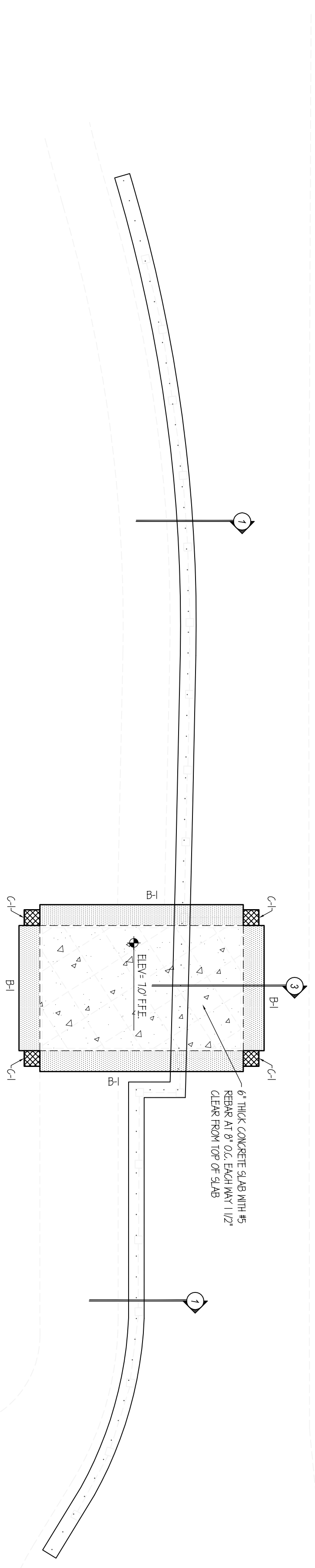
MAIN PAVILION



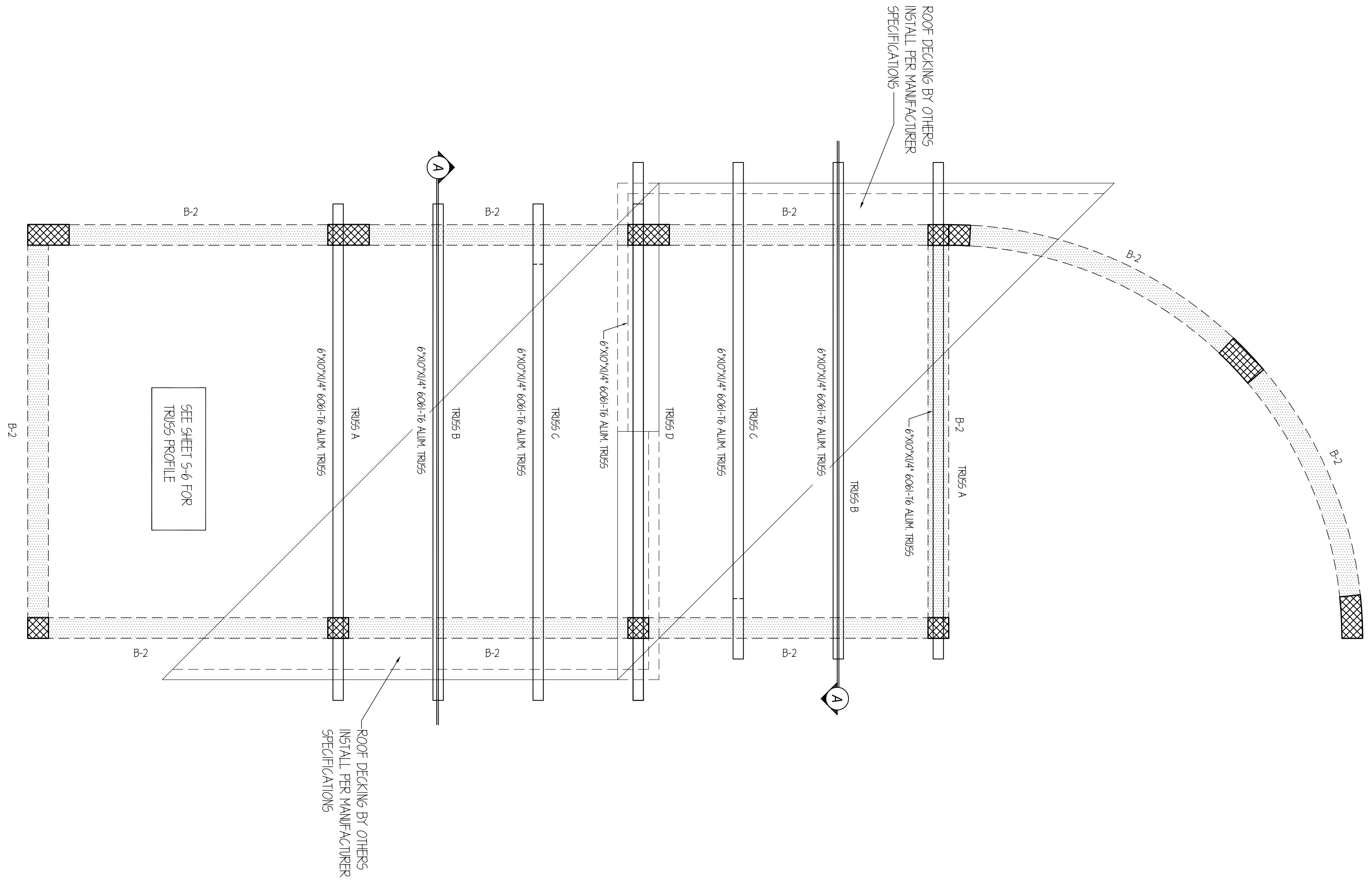
SATELLITE PAVILION (EAST)



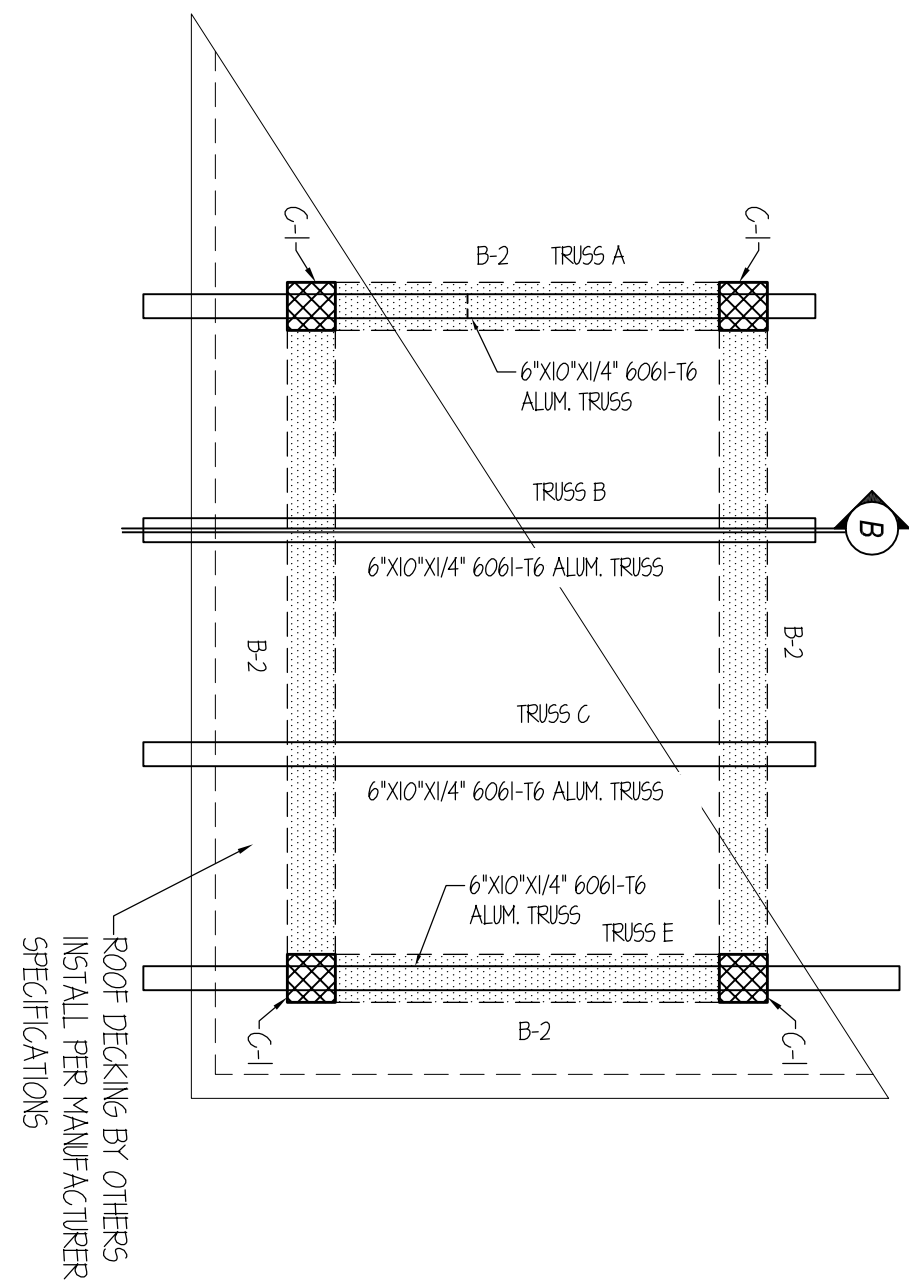
SATELLITE PAVILION (WEST)



MAIN PAVILION



SATELLITE PAVILION



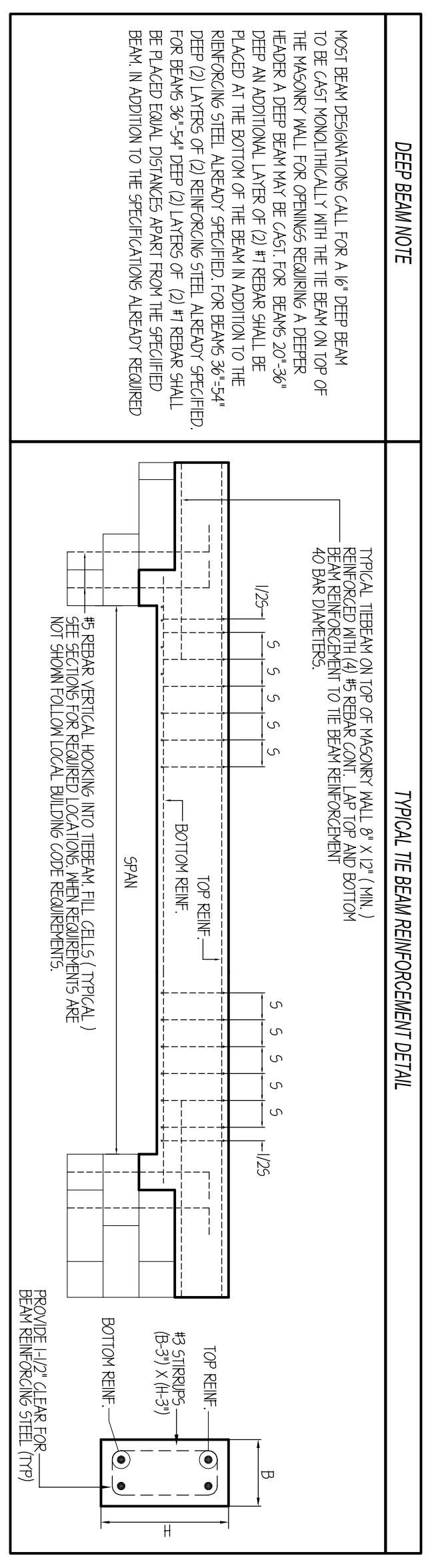
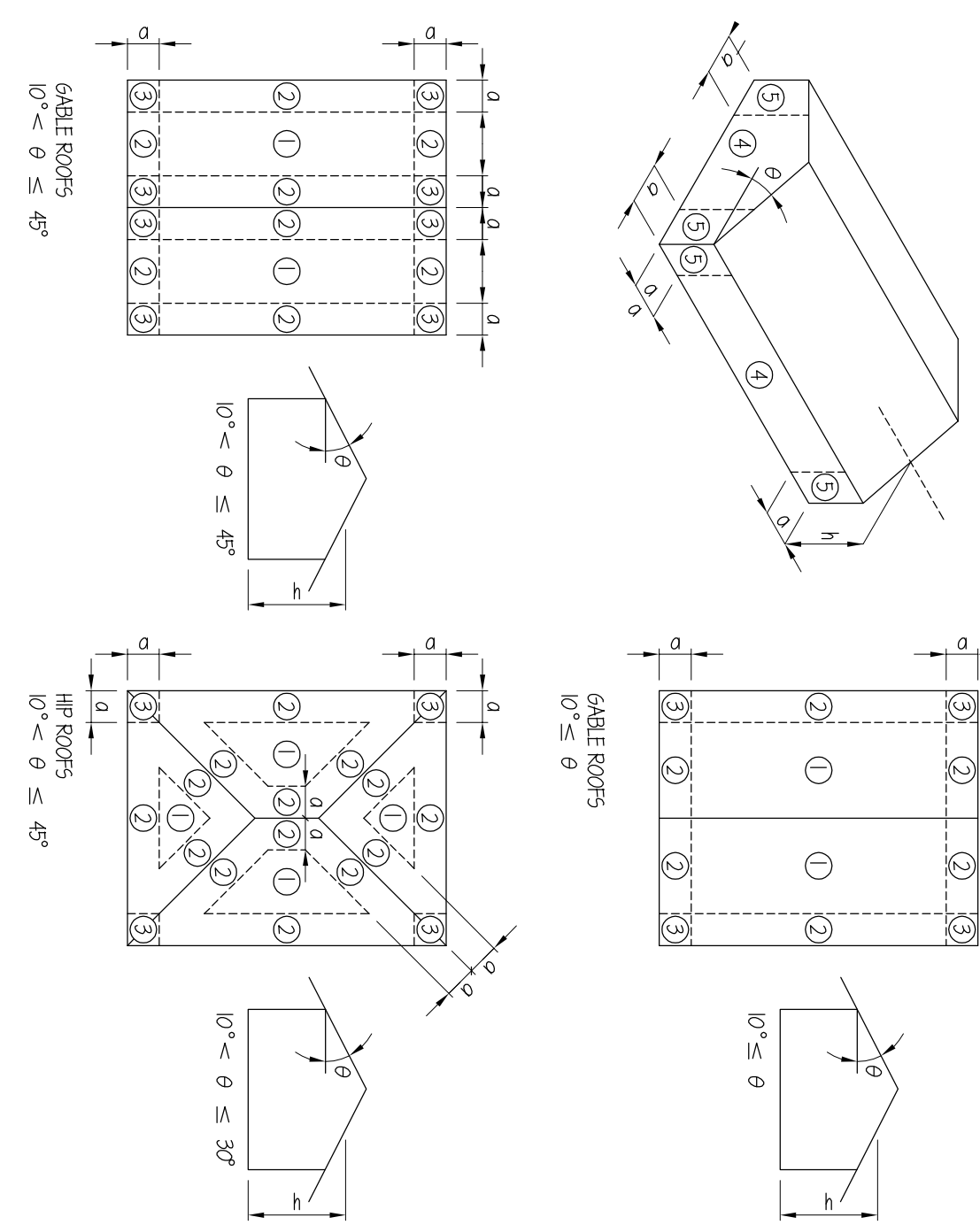
NOTES

1. COORDINATION OF CONSTRUCTION INCLUDING APPLICATION OF REINFORCEMENT, ELEVATION, AND FIELD CONDITIONS IS THE RESPONSIBILITY OF THE CONTRACTOR. ANY DISCREPANCIES OR CONFLICTS BETWEEN THE DRAWINGS AND FIELD CONDITIONS SHALL BE REPORTED IMMEDIATELY TO THE ARCHITECT FOR REVIEW AND RESOLUTION. SEE ARCHITECTURAL DRAWINGS.
2. ALL REINFORCEMENT SHALL BE INSTALLED IN ACCORDANCE WITH THE REINFORCEMENT SCHEDULE AND LOCAL BUILDING CODE REQUIREMENTS.
3. REINFORCEMENT SHALL BE AS PER AAS, GRADE TO BE DETERMINED BY THE ARCHITECT. ALL REINFORCEMENT SHALL BE INSTALLED IN ACCORDANCE WITH THE REINFORCEMENT SCHEDULE AND LOCAL BUILDING CODE REQUIREMENTS.
4. ALL CONCRETE SHALL BE PLACED IN ACCORDANCE WITH THE REINFORCEMENT SCHEDULE AND LOCAL BUILDING CODE REQUIREMENTS.
5. CONCRETE COVER REQUIREMENTS FOR REINFORCEMENT SHALL BE AS PER AAS, GRADE TO BE DETERMINED BY THE ARCHITECT. ALL CONCRETE SHALL BE PLACED IN ACCORDANCE WITH THE REINFORCEMENT SCHEDULE AND LOCAL BUILDING CODE REQUIREMENTS.
6. ALL REINFORCEMENT SHALL BE INSTALLED IN ACCORDANCE WITH THE REINFORCEMENT SCHEDULE AND LOCAL BUILDING CODE REQUIREMENTS.
7. ALL REINFORCEMENT SHALL BE INSTALLED IN ACCORDANCE WITH THE REINFORCEMENT SCHEDULE AND LOCAL BUILDING CODE REQUIREMENTS.
8. ALL REINFORCEMENT SHALL BE INSTALLED IN ACCORDANCE WITH THE REINFORCEMENT SCHEDULE AND LOCAL BUILDING CODE REQUIREMENTS.
9. ALL REINFORCEMENT SHALL BE INSTALLED IN ACCORDANCE WITH THE REINFORCEMENT SCHEDULE AND LOCAL BUILDING CODE REQUIREMENTS.
10. ALL REINFORCEMENT SHALL BE INSTALLED IN ACCORDANCE WITH THE REINFORCEMENT SCHEDULE AND LOCAL BUILDING CODE REQUIREMENTS.
11. ALL REINFORCEMENT SHALL BE INSTALLED IN ACCORDANCE WITH THE REINFORCEMENT SCHEDULE AND LOCAL BUILDING CODE REQUIREMENTS.
12. ALL REINFORCEMENT SHALL BE INSTALLED IN ACCORDANCE WITH THE REINFORCEMENT SCHEDULE AND LOCAL BUILDING CODE REQUIREMENTS.
13. ALL REINFORCEMENT SHALL BE INSTALLED IN ACCORDANCE WITH THE REINFORCEMENT SCHEDULE AND LOCAL BUILDING CODE REQUIREMENTS.
14. ALL REINFORCEMENT SHALL BE INSTALLED IN ACCORDANCE WITH THE REINFORCEMENT SCHEDULE AND LOCAL BUILDING CODE REQUIREMENTS.
15. ALL REINFORCEMENT SHALL BE INSTALLED IN ACCORDANCE WITH THE REINFORCEMENT SCHEDULE AND LOCAL BUILDING CODE REQUIREMENTS.
16. ALL REINFORCEMENT SHALL BE INSTALLED IN ACCORDANCE WITH THE REINFORCEMENT SCHEDULE AND LOCAL BUILDING CODE REQUIREMENTS.
17. ALL REINFORCEMENT SHALL BE INSTALLED IN ACCORDANCE WITH THE REINFORCEMENT SCHEDULE AND LOCAL BUILDING CODE REQUIREMENTS.
18. ALL REINFORCEMENT SHALL BE INSTALLED IN ACCORDANCE WITH THE REINFORCEMENT SCHEDULE AND LOCAL BUILDING CODE REQUIREMENTS.
19. ALL REINFORCEMENT SHALL BE INSTALLED IN ACCORDANCE WITH THE REINFORCEMENT SCHEDULE AND LOCAL BUILDING CODE REQUIREMENTS.
20. ALL REINFORCEMENT SHALL BE INSTALLED IN ACCORDANCE WITH THE REINFORCEMENT SCHEDULE AND LOCAL BUILDING CODE REQUIREMENTS.

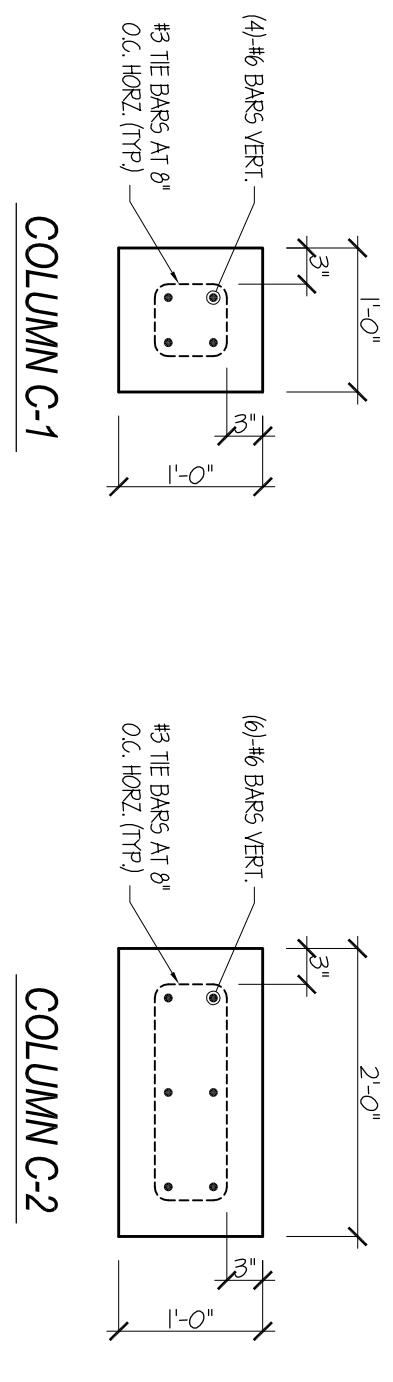
AREA OF FLOOR OR WINDOW	LOCATION/ON STRUCTURE	DESIGN PRESSURE (PROTECTED OPENINGS)
LESS THAN 50 SF	STANDARD END ZONE	-50 PSF/45 PSF
GREATER THAN 50 SF	STANDARD END ZONE	-50 PSF/45 PSF

NOTE: ALL DOORS AND WINDOWS ARE TO BE PROTECTED WITH APPROVED IMPACT RESISTANT GLASS OR SHUTTERS FOR WIND BURN DAMAGE TO THE FLOOR PLANE. FOR WIND BURN DAMAGE TO THE FLOOR PLANE, APPROVED IMPACT RESISTANT GLASS OR SHUTTERS SHALL BE INSTALLED IN ACCORDANCE WITH THE REINFORCEMENT SCHEDULE AND LOCAL BUILDING CODE REQUIREMENTS.

- WIND LOAD REQUIREMENTS**
1. THE STRUCTURAL SYSTEMS FOR THE DRAWINGS PRESENTED WERE DESIGNED FOR THE LOADINGS PRESENTED IN THE FLORIDA BUILDING CODE 2007 EDITION WITH 2004 SUPPLEMENTS. THE DESIGN WIND SPEED IS 140 MPH.
 2. EXPOSURE CATEGORY IS 1 OF THE FLORIDA BUILDING CODE 2007 EDITION WITH 2004 SUPPLEMENTS.
 3. EXPOSURE CATEGORY C OF THE FLORIDA BUILDING CODE 2007 EDITION WITH 2004 SUPPLEMENTS.
 4. INTERNAL PRESSURE COEFFICIENT (ACEI 1-05) 0.00 OPEN STRUCTURE.



COLUMN	COLUMN DESCRIPTION
C-1	12" X 12" CAST IN PLACE CONCRETE COLUMN SEE COLUMN SCHEDULE FOR REINFORCEMENT
C-2	12" X 12" CAST IN PLACE CONCRETE COLUMN SEE COLUMN SCHEDULE FOR REINFORCEMENT



BEAM	TOP REINFORCEMENT	MIDDLE REINFORCEMENT	BOTTOM REINFORCEMENT	# STIRRUPS AT EACH END
B-1	4 #4	-	4 #4	#2
B-2	3 #4	3 #4	3 #4	#2

ROOF ZONE	APPLIED DESIGN PRESSURE
1	-444 / 445 PSF
2	-453 / 451 PSF
3	-366 / 445 PSF

WALL ZONE	APPLIED DESIGN PRESSURE
4	-536 / 444 PSF
5	-461 / 444 PSF

NOTE: ALL DOORS AND WINDOWS ARE TO BE PROTECTED WITH APPROVED IMPACT RESISTANT GLASS OR SHUTTERS.

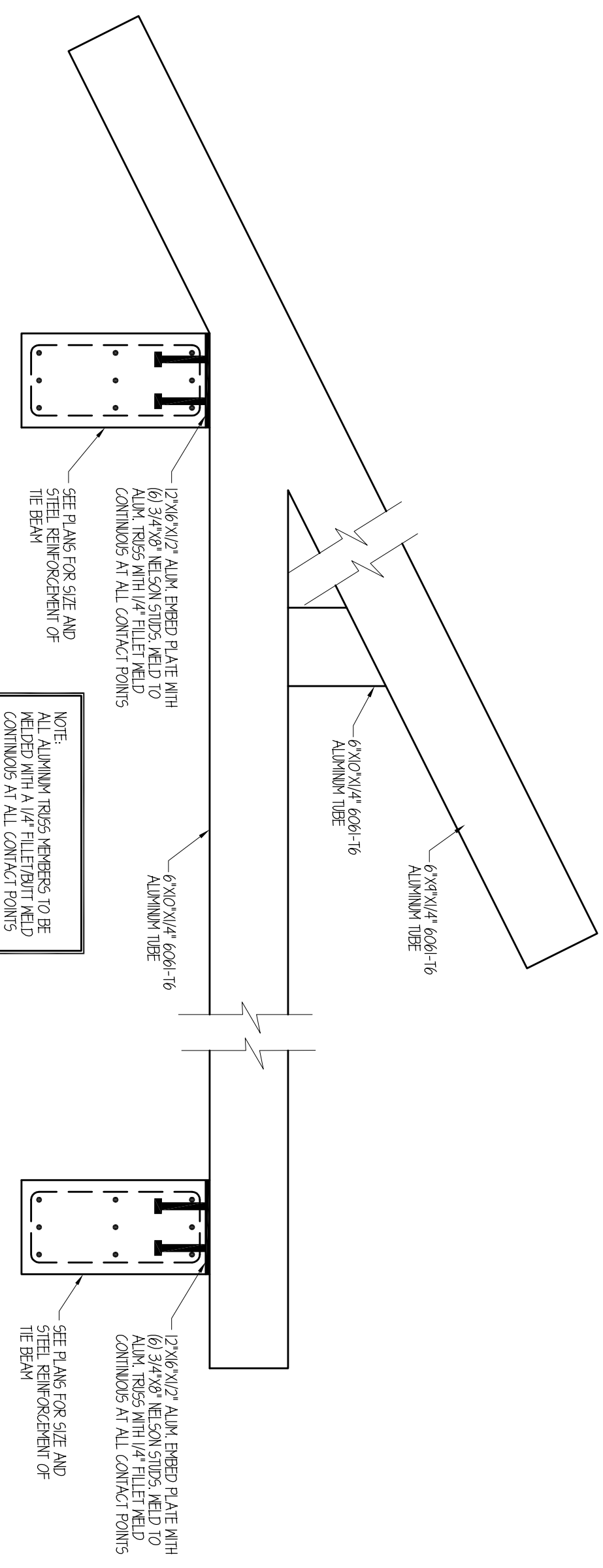
**NCH BRIGGS
FOUNDERS PARK
DYEHOUSE COMERIATO
ARCHITECT**

CRONIN ENGINEERING, INC.
CERTIFICATE OF AUTHORIZATION NUMBER: 8597
6627 WILLOW PARK DRIVE
NAPLES, FL 34109
PHONE: 593-2157 FAX: 593-8820

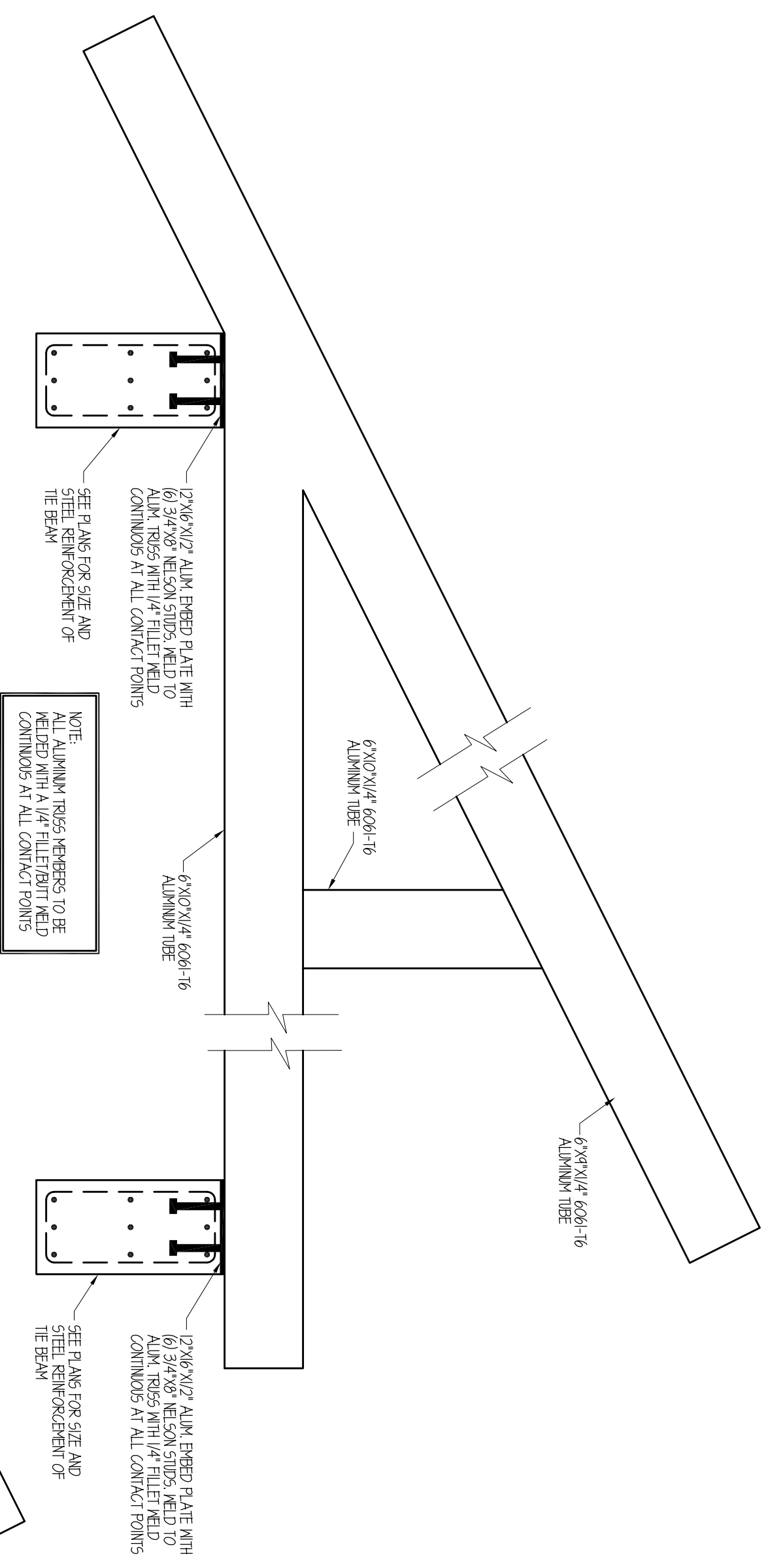
I CERTIFY THAT THESE PLANS AND SPECIFICATIONS CONFORM TO LOCAL BUILDING CODE REQUIREMENTS.
DEBRA P. CRONIN
FLORIDA PE # 5582

GENERAL NOTES AND SCHEDULES

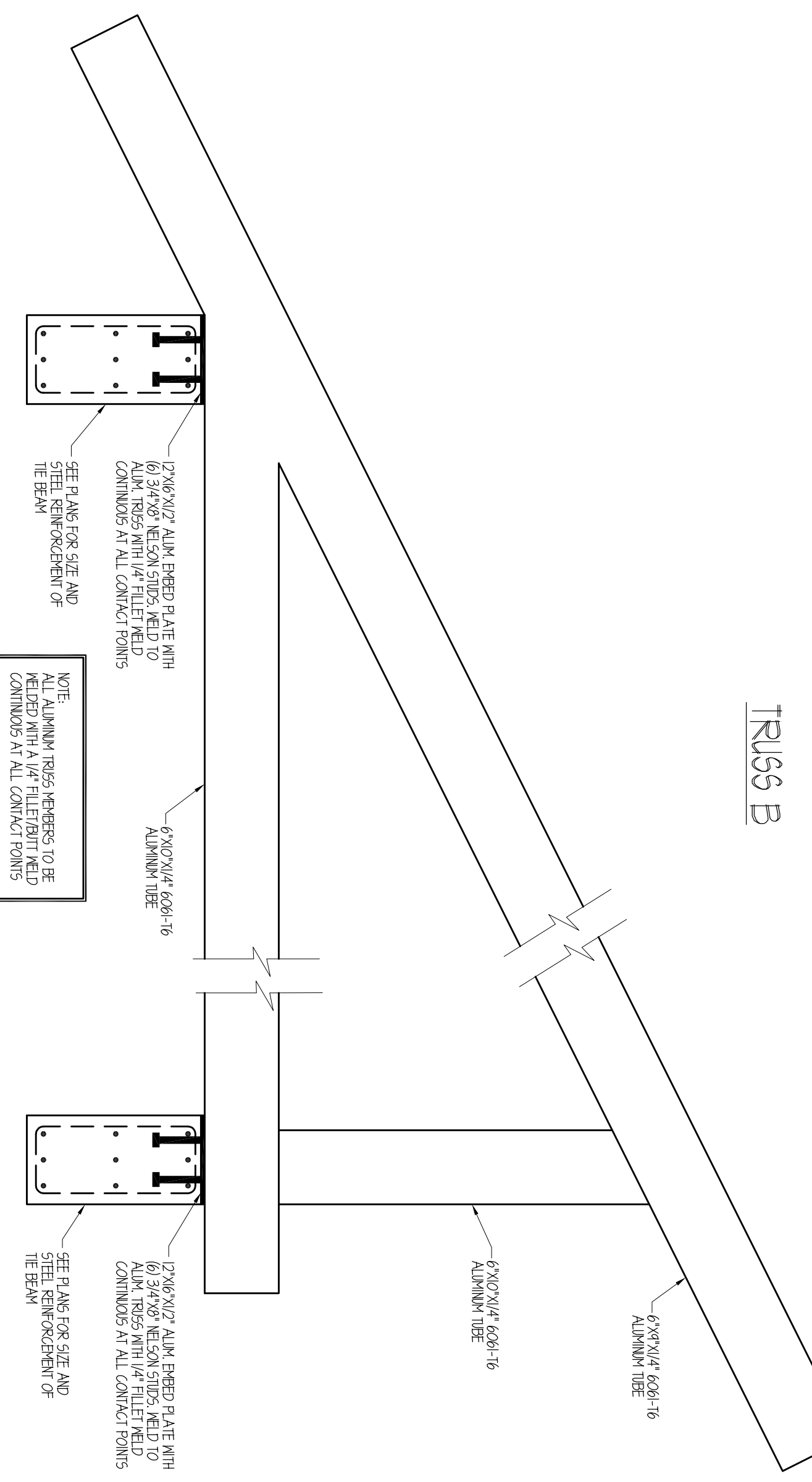
DATE: 4-11-11	PROJECT #: 1015-57-01	DRAWN BY: CAL	SCALE: N.T.S.	#	REVISIONS	DATE
---------------	-----------------------	---------------	---------------	---	-----------	------



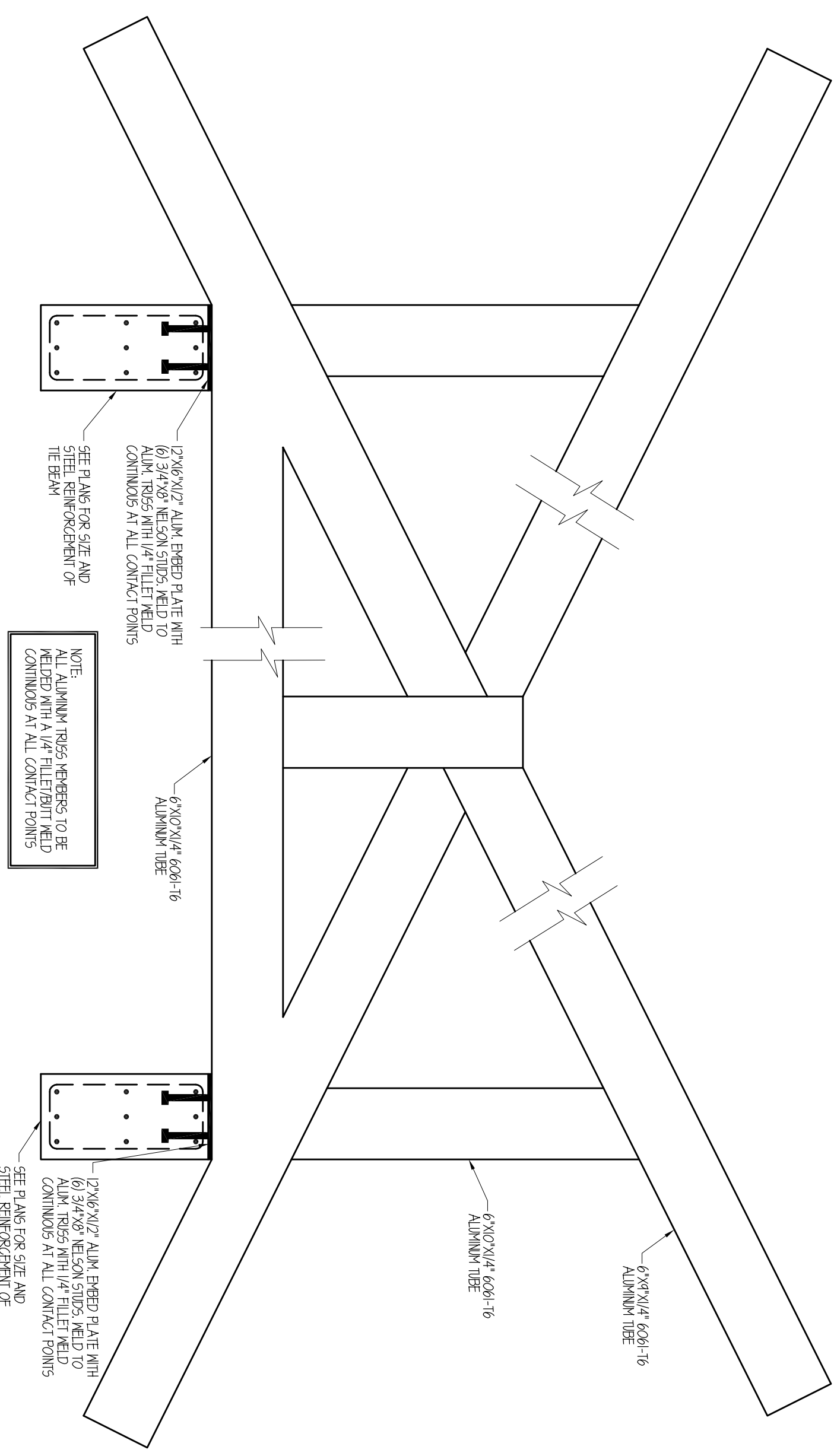
TRUSS A



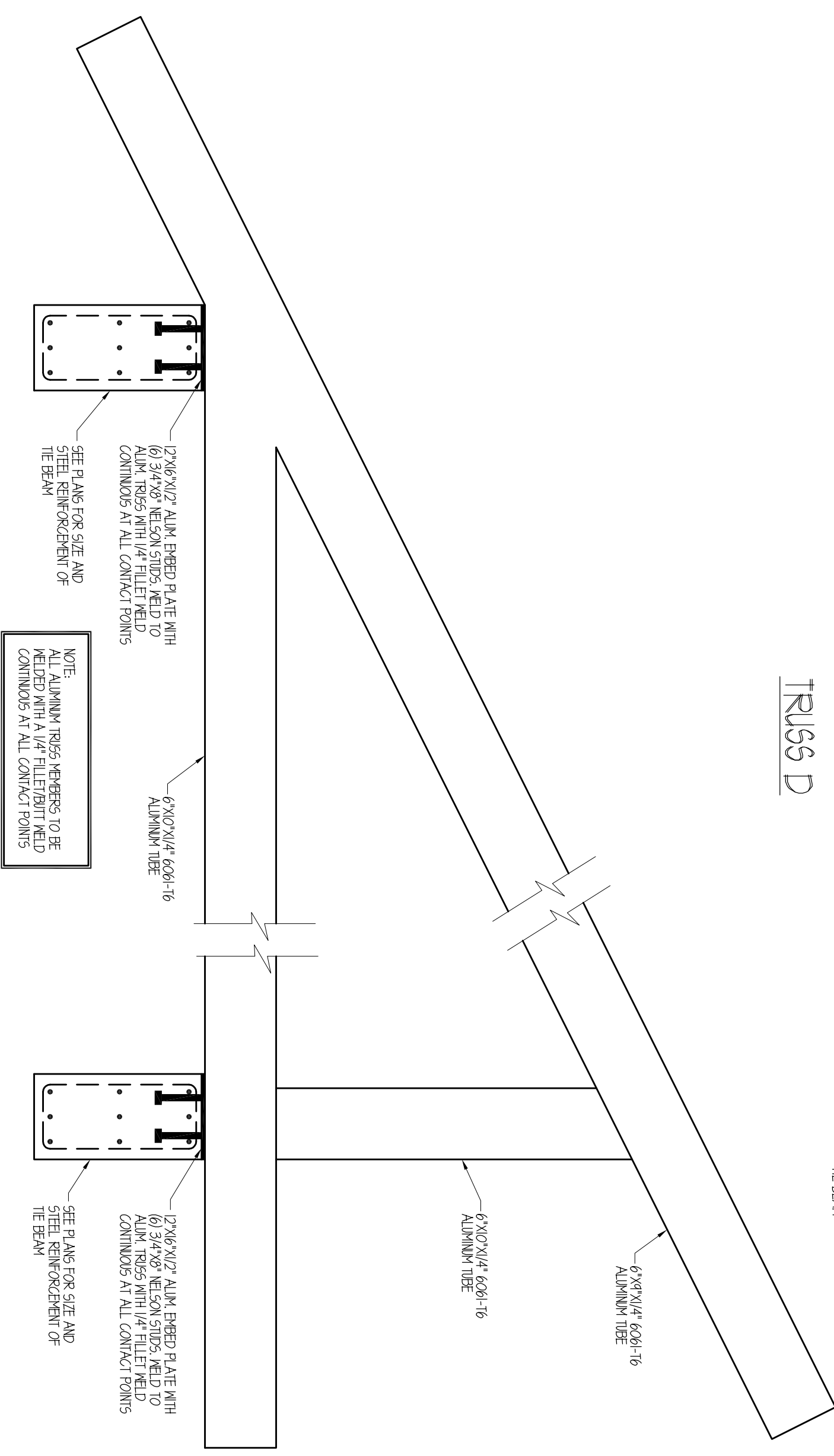
TRUSS B



TRUSS C



TRUSS D



TRUSS E

#	REVISIONS	DATE

TRUSS SECTIONS

DATE: 4-11-11 PROJECT #: 1015-57-01 DRAWN BY: C.A.L. SCALE: 3/4" = 1'-0"

I CERTIFY THAT THESE PLANS AND SPECIFICATIONS CONFORM TO LOCAL BUILDING CODE REQUIREMENTS.
DEREK P. CRONIN
FLORIDA PE # 5582

CRONIN ENGINEERING, INC.
CERTIFICATE OF AUTHORIZATION NUMBER: 8597
6627 WILLOW PARK DRIVE
NAPLES, FL 34109
PHONE: 593-2157 FAX: 593-8820

NCH BRIGGS
FOUNDERS PARK
DYEHOUSE COMERIATO
ARCHITECT